

EPA24 SERIES



24W EXTERNAL

DIMENSIONS:



US/CN: 2.83 x 1.34 x 2.72" (72 x 34 x 69mm)
 EU: 2.83 x 1.34 x 3.54" (72 x 34 x 90mm)
 UK: 2.83 x 1.97 x 3.19" (72 x 50 x 81mm)
 AU: 2.83 x 1.57 x 3.07" (72 x 40 x 78mm)
 CHANGEABLE: 2.83 x 1.41 x 2.60" (72 x 36 x 66mm)

**INTERCHANGEABLE
VERSION**

LEVEL VI EFFICIENCY

**CONNECTOR
CUSTOMISATION**

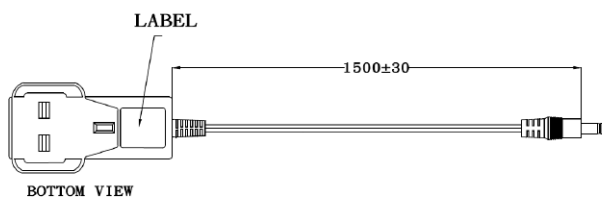
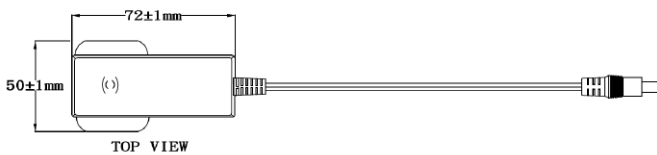
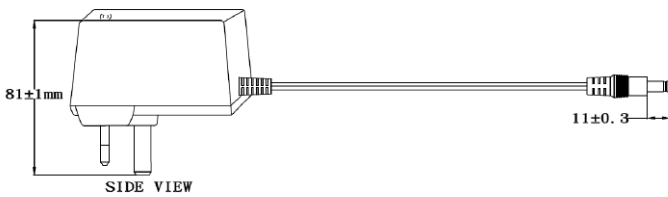
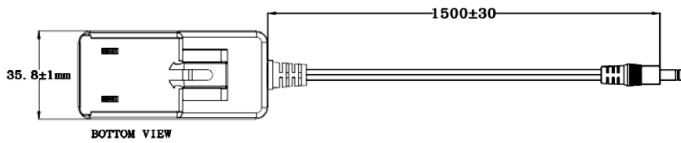
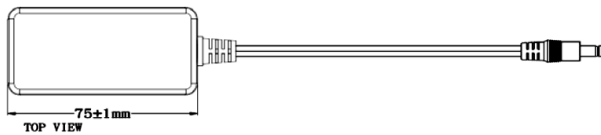
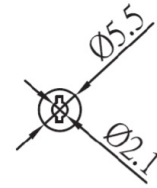
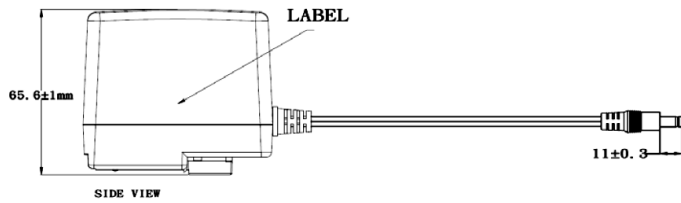
Part numbers

EPA	24	24	-	UK
Series	Power (W)	Output voltage		Options
		05 = 5VDC 09 = 9VDC 12 = 12VDC 15 = 15VDC 24 = 24VDC 48 = 48VDC		-UK -US -EU -CN -AU -FIXED PLUG

Key specifications

Input range	Safety certification	Efficiency	Environmental performance
90-264VAC	UL/IEC/EN 62368-1, PSE, RCM	<86%	Operational: 0 to 60°C

Mechanical



Notes

1. All dimensions in mm
2. Output connector : 2.1 / 5.5 / 9.5mm tuning fork style
3. DC cable UL2468 5V-9V AWG18 (5V 1M only) and 12V-24V AWG22

Weight

UK	US/CH	EU	AU	CHANGE ABLE
158g	148g	154g	150g	158g typ



Models & Ratings

Model Number ⁽¹⁾	Output Power	Output voltage	Output current
EPA2405-UKF	20W	5V	4A
EPA2509-UKF	22.5W	9V	2.5A
EPA2412-UKF	24W	12V	2.0A
EPA2415-UKF	24W	15V	1.6A
EPA2424-UKF	24W	24V	1.0A
EPA2448-UKF	24W	48V	0.5A

1. For fixed moulded plug change -UKF for:- US use -USF, EU use -EUF, CN use -CNF, AU use -AUF.
 2. For removeable plug change -UK for:- US use -US, EU use -EU, CN use -CN, AU use -AU or -ALL for set.

3. Alternative output connectors available for production quantities. Contact sales for details.
 4. 5.9V 3.5A/4A & 7V also available. Contact sales for details.



Input

Parameter	Min	Typical	Max	Unit	Notes/Conditions
Input voltage	90		264	VAC	No derating
Input frequency	47		63	Hz	
Power factor					EN61000-3-2 class A compliant
Input current (rms)			0.58	A	
Inrush current			50	A	High line. Full load, 25°C cool start, Vin=100VAC
			60		High line. Full load, 25°C cool start, Vin=240VAC
No load input power			0.075	W	230VAC



Output

Parameter	Min	Typical	Max	Unit	Notes/Conditions
Output voltage	5		48	VDC	Other output options available
Total regulation		±6		%	
Minimum load	0			%	
Transient response		0.5		mS	50% load change
Ripple & noise		2		%Vp-p	All models measured with 10uF and 0.1uf capacitor. 20 MHz bandwidth
Hold up time	10			mS	At full load

Protections

Parameter	Min	Typical	Max	Unit	Notes/Conditions
Overload		200		%	Automatic recovery
Short circuit					Automatic recovery
Over voltage protection		240		%	Latch off reset

Safety

Parameter	Min	Typical	Max	Unit	Notes/Conditions
Safety standards	UL/IEC/EN 62368-1				PSE, RCM
Isolation	Input to Output: 3000			VAC	For 1 minute
Insulation resistance		10		MOhm	500Vdc input to output and output to ground
Power density	1.12		2.32	W/In3	

EMC: Emissions

	Standard	Test level	Criteria	Notes/Conditions
Conducted	EN55032	B		
Radiated	EN55032	B		
Harmonic current	EN61000-3-2	Class A		
Voltage flicker	EN61000-3-3			

EMC: Immunity

	Standard	Test level	Criteria	Notes/Conditions
ESD	EN61000-4-2	2, 3	A	Contact: 4kV, Air: 8kV
Radiated	EN61000-4-3	2	A	3V/m, 80MHz-1000MHz, 1kHz 80% AM modulation
EFT	EN61000-4-4	2	A	1kV
Surges	EN61000-4-5	Installation class 3	A	2kV L/N to PE 1KV Line to Neutral both at 0°, 90°,180°,270°
Conducted	EN61000-4-6	2	A	3Vrms, 1kHz 80% AM modulation 150kHz-80MHz
PFMF	EN61000-4-8	1	A	1A/m
Dips and interruptions	EN61000-4-11	Interrupt 250, 300 cycles, 95% for 0.5/0.6 cycles, 30% for 25/30 cycles B,A,A		

Environmental

Parameter	Min	Typical	Max	Unit	Notes/Conditions
Operating temperature	-0		60	°C	See derating curve below
Storage temperature	-20		80	°C	
Cooling					Convection cooled
Operating humidity	20		80	% RH	
Storage humidity	10		90	% RH	
MTBF	300			kHrs	As per Telcordia SR-332

Derating curve

